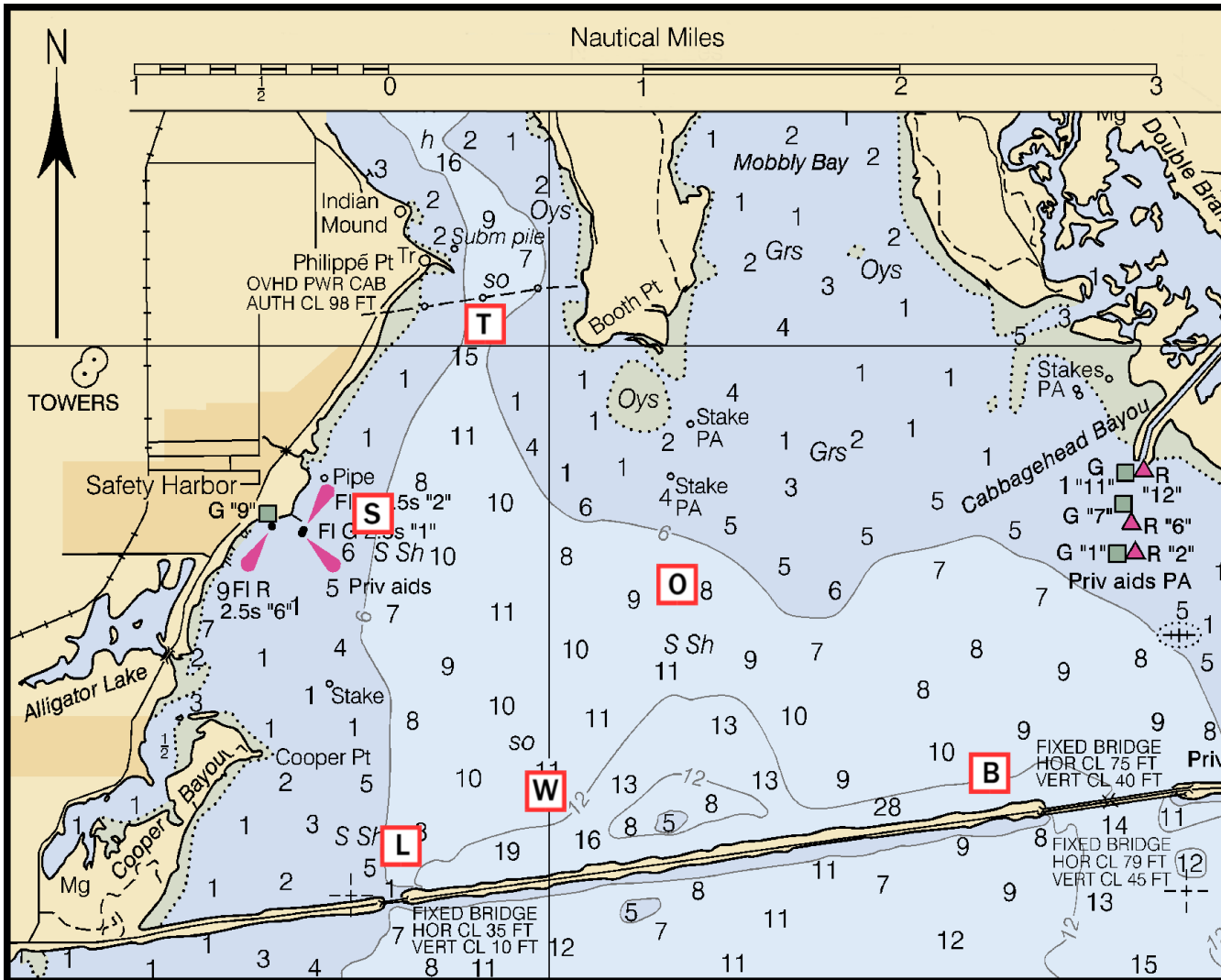
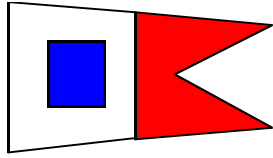


SHBC RACE MARKS



S	Start/Finish	27 59.386 82 40.829
O	Orange (East)	27 59.054 82 39.454
W	White (South)	27 58.193 82 40.097
L	Little Bridge	27 57.993 82 40.663
B	Big Bridge	27 58.277 82 38.020
T	Middle Tower	28 00.194 82 40.306



SHBC MARKS , BEARINGS and DISTANCE

		TO SHBC MARK					
		Start	Orange	White	Little Bridge	Big Bridge	Middle Tower
FROM SHBC MARK	Start		110° 1.26nm	156° 1.35nm	178° 1.40nm	119° 2.72nm	34° 0.93nm
	Orange	290° 1.26nm		218° 1.03nm	230° 1.51nm	126° 1.49nm	
	White	336° 1.35nm	38° 1.03nm		253° 0.54nm	92° 1.84nm	359° 2.00nm
	Little Bridge	358° 1.40 nm	50° 1.51nm	73° 0.54nm		88° 2.36nm	13° 2.22nm
	Big Bridge	299° 2.72nm	306° 1.49nm	272° 1.84nm	268° 2.36nm		
	Middle Tower	214° 0.93nm		179° 2.00nm	193° 2.22nm		

2015 : Bearings between marks are Magnetic. Distance in Nautical Miles.